

ALEX JOHNSON HOTEL – WINDOW REPLACEMENT

Historic Preservation Application



ORIGINAL CONSTRUCTION

• A P R O F E S S I O N A L C O R P O R A T I O N •

725 ST. JOSEPH STREET, B-1
RAPID CITY, SOUTH DAKOTA 57701-2720
PHONE (605)355-6804 | FAX (970)422-7422
www.chamberlinarchitects.com



**ORIGINAL ARTIST RENDERING USING BROWN
DOUBLE HUNG WINDOWS**



**ORIGINAL DOUBLE HUNG WINDOW
NOT BEING REPLACED**

· A P R O F E S S I O N A L C O R P O R A T I O N ·

725 ST. JOSEPH STREET, B-1
RAPID CITY, SOUTH DAKOTA 57701-2720
PHONE (605)355-6804 | FAX (970)422-7422
www.chamberlinarchitects.com



WEST SIDE OF BUILDING

· A P R O F E S S I O N A L C O R P O R A T I O N ·

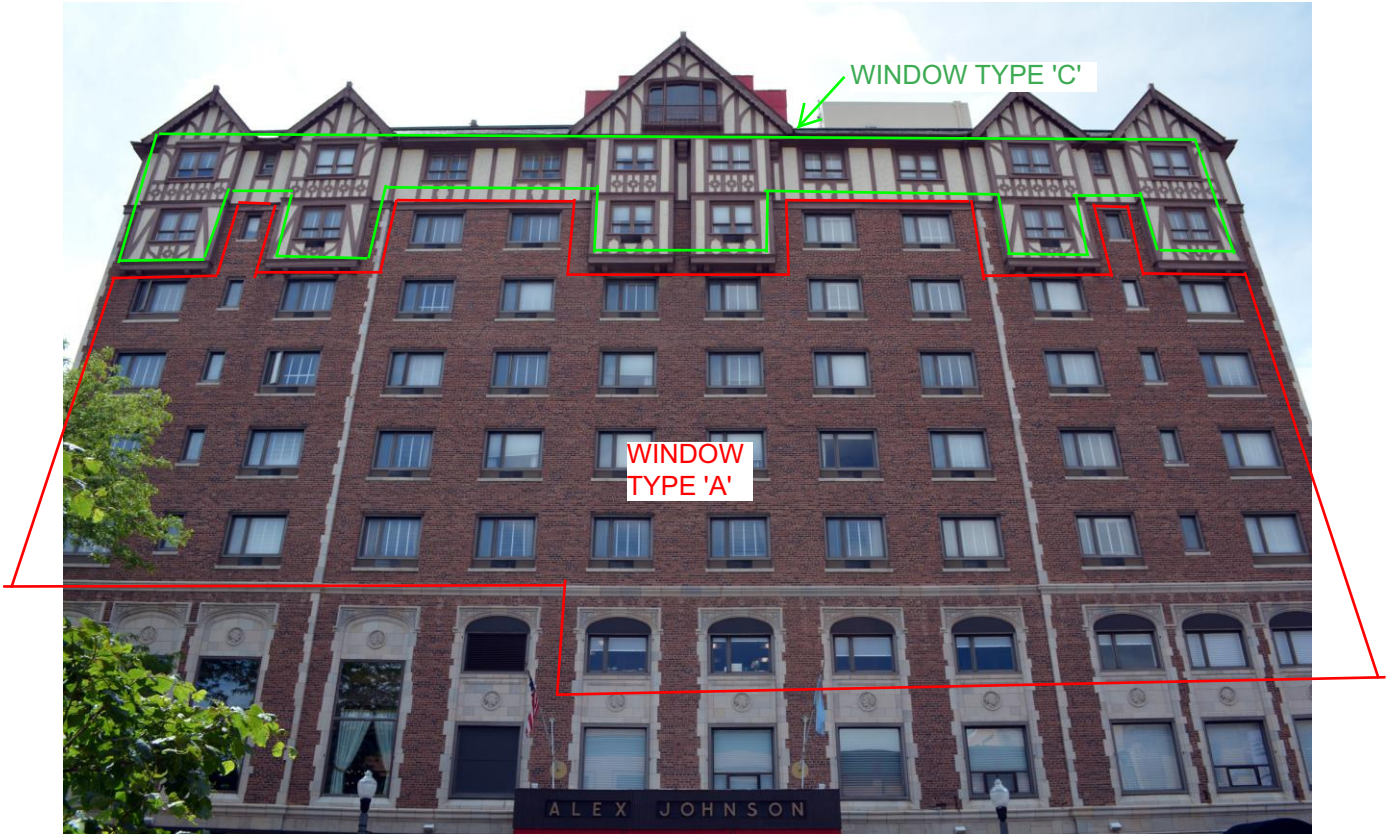
725 ST. JOSEPH STREET, B-1
RAPID CITY, SOUTH DAKOTA 57701-2720
PHONE (605)355-6804 | FAX (970)422-7422
www.chamberlinarchitects.com



NORTH SIDE OF BUILDING (ALLEY SIDE)

· A P R O F E S S I O N A L C O R P O R A T I O N ·

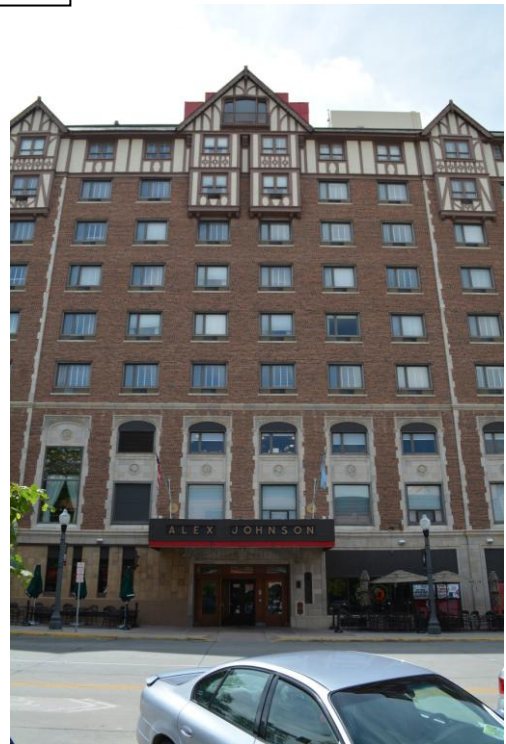
725 ST. JOSEPH STREET, B-1
RAPID CITY, SOUTH DAKOTA 57701-2720
PHONE (605)355-6804 | FAX (970)422-7422
www.chamberlinarchitects.com



EAST SIDE OF BUILDING



NON-ORIGINAL DOUBLE HUNG WINDOWS (TYPE 2)



· A P R O F E S S I O N A L C O R P O R A T I O N ·

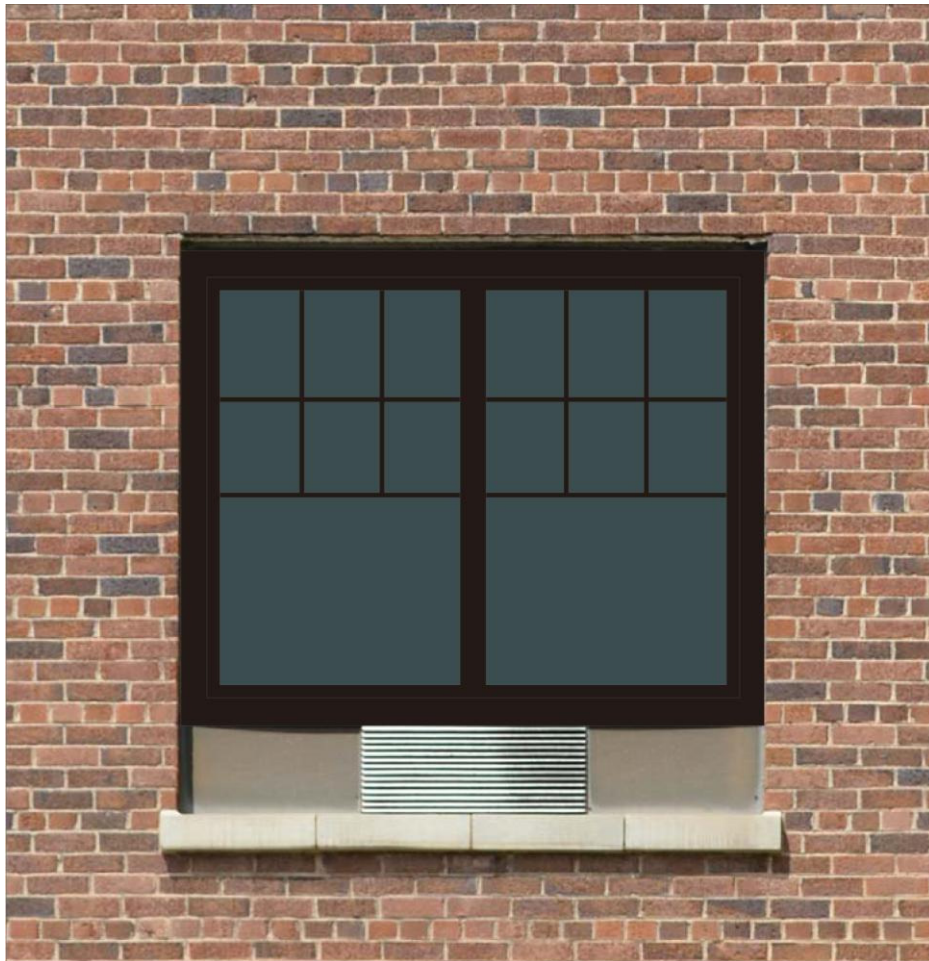
725 ST. JOSEPH STREET, B-1
 RAPID CITY, SOUTH DAKOTA 57701-2720
 PHONE (605)355-6804 | FAX (970)422-7422
 www.chamberlinarchitects.com



SOUTH SIDE OF BUILDING

· A P R O F E S S I O N A L C O R P O R A T I O N ·

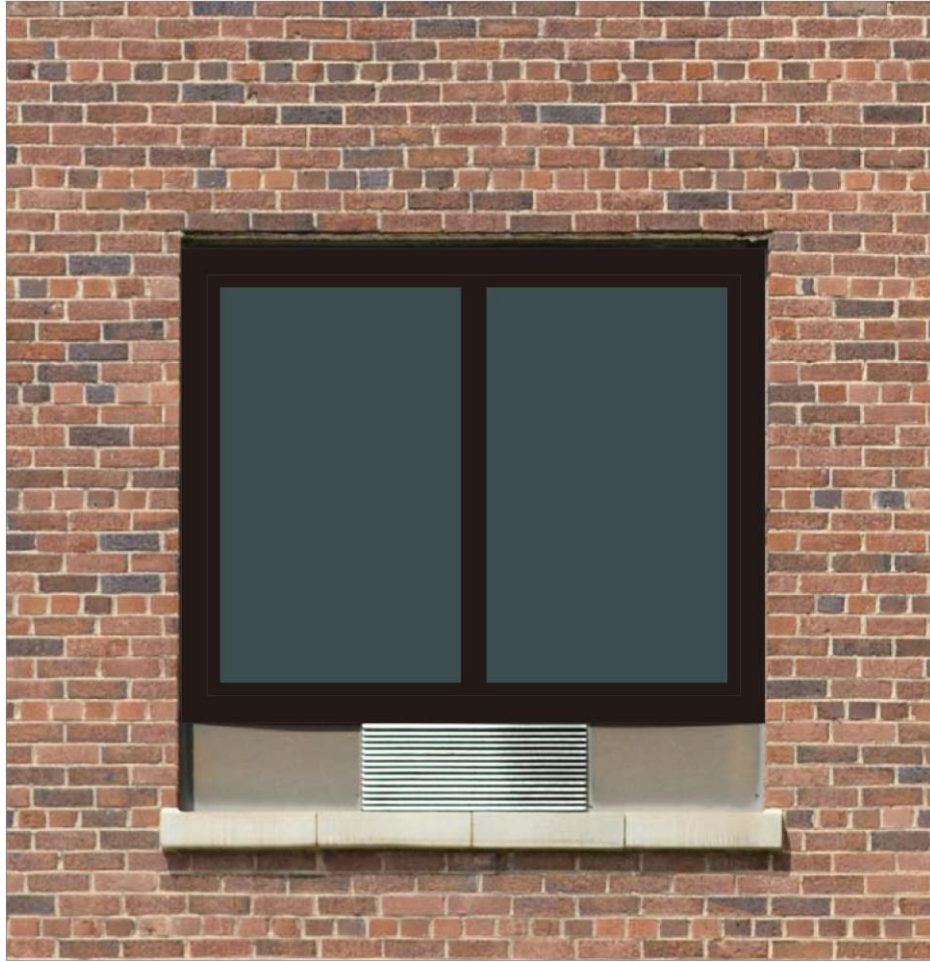
725 ST. JOSEPH STREET, B-1
RAPID CITY, SOUTH DAKOTA 57701-2720
PHONE (605)355-6804 | FAX (970)422-7422
www.chamberlinarchitects.com



PROPOSED WINDOW 'A'

- ALUMINUM CLAD EXTERIOR WITH WOOD INTERIOR
- INTERIOR WOOD PAINTED WHITE
- TRIPLE PANE WITH DECORATIVE DIVIDERS (MUNTINS) BETWEEN GLASS
- FIXED, DIRECT SET UNIT
- COLOR: BROWN

LOCATIONS: NORTH, SOUTH AND EAST SIDES OF BUILDING; 3RD FLOOR THROUGH 8TH FLOOR (EXCLUDES 3RD FLOOR ON SOUTH SIDE)



PROPOSED WINDOW 'B'

- ALUMINUM CLAD EXTERIOR WITH WOOD INTERIOR
- INTERIOR WOOD PAINTED WHITE
- TRIPLE PANE WITH NO DIVIDED LITES
- FIXED, DIRECT SET UNIT
- COLOR: BROWN

LOCATAION: WEST SIDE OF BUILDING; 3RD FLOOR
THROUGH 9TH FLOOR

A/C LOUVER AND PANEL TO REMAIN



PROPOSED WINDOW 'C'

- ALUMINUM CLAD EXTERIOR WITH WOOD INTERIOR
- INTERIOR WOOD PAINTED WHITE
- TRIPLE PANE WITH DECORATIVE DIVIDERS (MUNTINS) BETWEEN GLASS
- FIXED, DIRECT SET UNIT
- COLOR: BROWN

LOCATIONS: NORTH, SOUTH AND EAST SIDES OF BUILDING; SOME 8TH FLOOR AND ALL 9TH FLOOR

· A P R O F E S S I O N A L C O R P O R A T I O N ·

725 ST. JOSEPH STREET, B-1
RAPID CITY, SOUTH DAKOTA 57701-2720
PHONE (605)355-6804 | FAX (970)422-7422
www.chamberlinarchitects.com